

Exclusive seigneurial listed house with garden and parking place for sale in the heart of Palafrugell

House built in 1900 and totally refurbished with high quality material con 4 dormitorios, 3 bathrooms, fireplace and terrace, located 2,5 km to Calella and Llafranc



Exclusive listed townhouse, totally refurbished with very high quality materials with a private garden and parking place, located in the centre of Palafrugell and 2,5 km to the famous beaches of Calella and Llafranc.

The house, built in 1900 on 3 levels offers an entrance hall, a living room with a fireplace, a study room, fully equipped kitchen with access to the garden with private well, dining room with access to the garden, guest toilets, laundry room and this beautiful old style staircase.

On the first floor, a large en suite bedroom with wardrobe, 2 double bedrooms - one with dressing room- and a large bathroom.

On the second floor, a vast open space with views to the village and garden, a double bedroom, a dressing room and a bathroom.

The house also offers aluminium frame windows with large double glazed, oak floor, central heating with city gas, air conditioning in the bedrooms, a parking place and it is possible to enlarge the house of an extra 70 sqm.

Energetic certificate:

Additional purchase fees: 11% tax + Notary fees and land registry fees

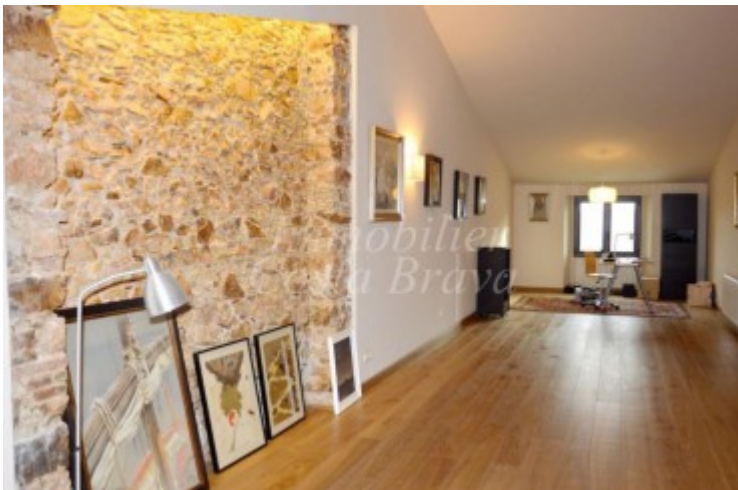
Bedrooms	4
Bathrooms	4
Surface	393 m²
Plot surface	400 m²
E. certificate	En cours
Parking	1
Terrace	✓
Aacc	✓
Heating	✓

Contact us today for more information or to arrange a viewing

(+34) 972 30 45 91

carole@immobiliercostabrava.com

<https://www.immobiliercostabrava.com>



[See more information about this property on our website](#)

Contact us today for more information or to arrange a viewing

(+34) 972 30 45 91

carole@immobiliercostabrava.com

<https://www.immobiliercostabrava.com>